

# WORD

## ON THE STREET



VOLUME 5, ISSUE 2

DECEMBER 2024

# INSIDE THIS ISSUE

## **FROM THE MANAGER'S DESK**

**4**

---

REFLECTION, MILLAGE, & SALT BARNs

## **MAINTENANCE**

**6**

---

OVERVIEW, NEW EQUIPMENT, & SALT BARNs

## **TECH COMMUNICATION**

**8**

---

PLOW LOCATOR / TRACKER

## **ENGINEERING**

**10**

---

PAVING, MILLAGE, & 2024 COMPLETED CONSTRUCTION PROJECTS

## **SAFETY**

**12**

---

CRASIF AWARDS, TRAINING, & WINTER SAFETY TIPS

## **FINANCE**

**14**

---

WHERE DOES THE REVENUE COME FROM & WHERE DOES IT GO?

# COMMUNITY OUTREACH

This was our first year implementing the Paint-A-Plow Program and not only was it a success, but in many ways, it allowed us to do more with our employees, our supervisory team, and our community.

Our Deputy Director of Finance & Benefits/Human Resources reached out to several high schools within Saginaw County, and ultimately, four schools were chosen to paint one of our snowplows for the 2024-2025 Winter Season. The schools included were Carrollton High School, Chesaning Union High School, Michigan Lutheran Seminary, and St. Charles High School.

The Director of Maintenance inspected and picked out each plow and communicated with the Foremen to get the plow to the school for the painting process to begin. The students did a great job and learned to work together to represent their school on each plow.

Once the plows were completed, our employees were excited to see the results as well as show off the students' designs in their homecoming parades and other community events!

Our employees had a great time at each of these events listed below and we look forward to serving our community and the public as each season passes.



*District 6 Truck Driver, Mitchel Hall*

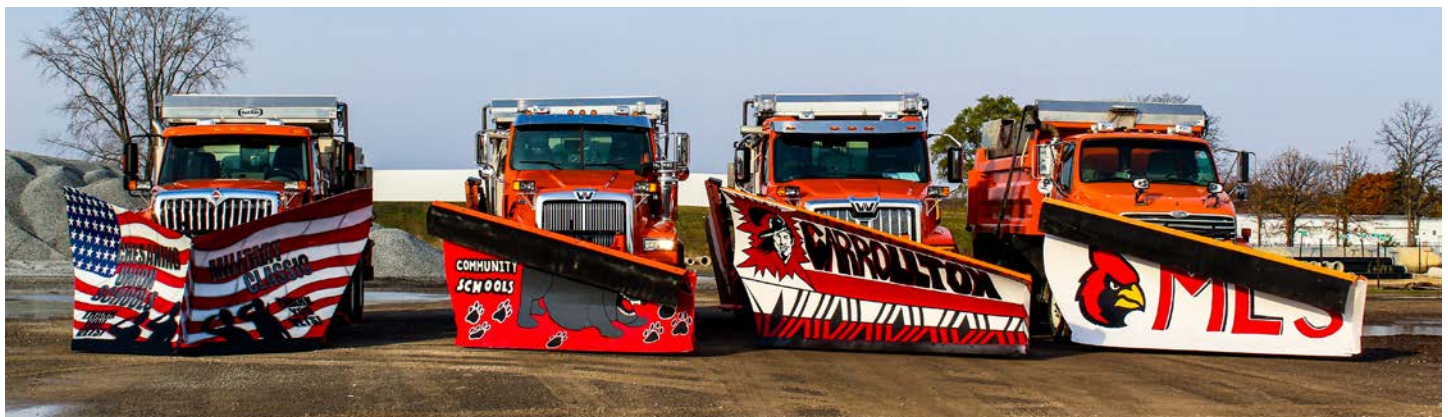


*District 5 Grader Operator, Chase Beyersdorf's son, Bennett*

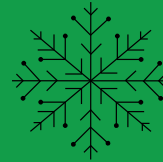


Community / Touch-a-Truck events participated in 2024 include:

- Mid-Michigan Children's Museum
- Hemlock Sawdust Days
- Hartley Outdoors
- Birch Run Motor Speedway
- Carrollton Learning Center
- Chesaning Homecoming Parade
- St. Charles Homecoming Parade
- Carrollton Homecoming Parade



# FROM THE MANAGER'S DESK



lifespan of our roads and improve the safety of our residents and visitors.

As we reflect on the season's successes, we are also very excited about two crucial accomplishments that will significantly impact Saginaw County's future infrastructure. The first is the passing of a Countywide local road millage. The 2 mill levy set for a 6-year term will generate over 12 million

annually throughout Saginaw County beginning in the summer of 2025. The much-needed funds will support critical road improvements across the 27 townships, cities, and villages within Saginaw County. This investment is expected to dramatically enhance road safety, reduce long-term maintenance costs, and boost the overall quality of our transportation network.

Saginaw County Road Commission is proud to announce the completion of another successful construction and chip seal season. This summer, SCRC efficiently executed a comprehensive schedule of routine maintenance, roadside mowing, brush hogging, sweeping, catch basin cleaning, high berm shoulder removal, and much more. The combination of targeted paving projects and diligent maintenance will extend the





**PAVING**



**GEDDES RD SALT BARN**

The second major accomplishment is the construction of two new salt barns, one in Chesaning Township (Brady Rd), and the other in Thomas Township (Geddes Rd). These facilities will dramatically improve operational efficiencies across all our townships, particularly during the winter months. By strategically locating these salt barn facilities, we now will ensure faster response time

for snow and ice removal, leading to safer roads and better service for our communities.

I also want to finish by acknowledging the hard work and dedication of our employees. Their commitment to excellence has been instrumental in making this another successful and safe summer. As we move forward, the Saginaw County Road Commission remains committed

to maintaining and improving infrastructure, ensuring that our roads are safe, reliable, and ready to meet the needs of our growing community.

Many thanks and appreciation!

*Dennis Borchard,  
Managing Director*

# MAINTENANCE

## CHIP SEAL



The 2024 SCRC Spring & Summer has come and gone. The days, months, and years fly by quicker with every day that passes. I would say our complete TEAM is like fine wine, which improves more with age. When joined with our younger generation of employees who are eager to learn, ambitious, have good attitudes, and have safety being a priority, the SCRC is a leader, example, and ally to other road agencies throughout Michigan. Many projects have been completed throughout this spring and summer, and I will touch on a few of them:

**Chip Seal** - On the primary roads in District-4, located in the Northwest portion of Saginaw County, we completed 60 miles of chip seal. On our local roads countywide, we completed 88 miles, for a total of 148 miles of chip seal.

**Gravel Hauling** - For a total of 23 complete miles, 18 miles of

23A modified natural gravel and 5 miles of 22A Limestone were hauled and placed.

**Ditching** - Many ditching miles have been completed Countywide, where some locations require us to haul the ditching material away as well. Our Foremen work hard at coordinating with farmers, asking for approval to utilize the farmer fields for material placement. This, of course, expedites the complete operation with minimal personnel required. The do diligence of our Foremen to make that initial contact with the farmers well in advance has been great.

**High Shoulder Removal** - Our high shoulder machine worked around the county, addressing all scheduled chip seal routes needing high shoulders removed. Our plan is to rotate primary roads per district every four years. This year, chip seal primary roads were completed in District 4. Next, the shoulder machine will be in District 6, the district that will have

chip seal primary roads scheduled in 2025. This will allow us to complete all high-shoulder issues per district a year ahead of the coming chip seal.

**Catch Basin Inspection & Cleanout** - We have two employees, Mariah Kelly and Rob Hudec, who have taken this program to another level. Their involvement and communication with EGLE and understanding of each other's responsibilities in reference to how we should be inspecting and cleaning our system have been most beneficial to SCRC. Setting realistic goals to stay in compliance with EGLE is an example for all MDOT, Counties, & municipalities alike. Excellent Job!

- X-Culvert replacement from 12" to large box culverts storm drain tile placement
- Brush cutting
- Curb sweeping
- Road patchwork



The mentioned activities are only some of the activities that our TEAM was able to complete.

Aside from projects, we were also able to purchase a variety of new equipment for the year 2024, which I will list below:

- (2) Tandem Trucks (District 2 & District 6)
- Cat 330 Excavator (countywide)
- (3) Pickup Trucks (Engineering Department)
- Foreman Pickup Truck (District 4)
- Mower Tractor (District 6)

(Blasting and painting of older equipment has been completed as well)

Finally, I would like to discuss the extremely exciting additions of our two brand-new salt sheds. Our commissioners are to be commended for their approval to move forward with the replacement of our current salt sheds. The size and placement of these new buildings will make us more efficient and cost-effective than ever before. This is a huge accomplishment and something that everyone in this organization should be proud of.

The Geddes Road salt shed site is in Thomas Township. This salt barn will have a capacity of 8,500 tons and 40' lean-to on both sides. The Brady Road (M-57) salt shed site is in Chesaning Township. This salt barn will have a capacity of 6,500 tons and 40'

lean-to on both sides as well. The remaining roof trusses were placed in November. The sealing of the interior concrete and all remaining inside tasks will be completed by the contractor next. The lingering outside work will then be completed.

Thank You to the SCRC TEAM for your continued effort in making SCRC a leader statewide. May the coming winter season be enjoyable but, more importantly, SAFE for all.

Thank You

*Dan Medina,  
Director of Maintenance*



# TECH

---

# COMMUNICATION



It is at that time of year that we start thinking of the winter events that we need to deal with both at home and work. In this article we'd like to show how we use GPS technology for both internal needs and public uses. Saginaw County has a land area of just over 800 square miles and SCRC maintains 1850 miles of county roads. We

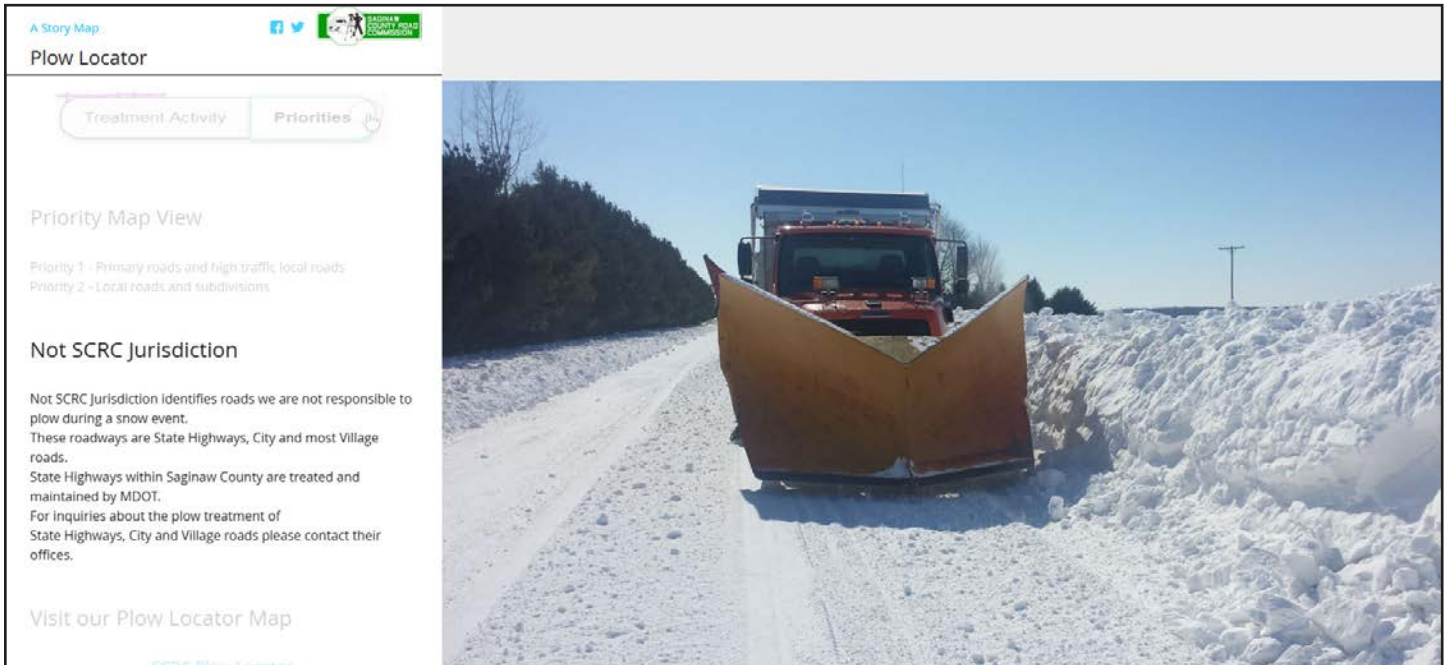
can have a large shift in the weather across the county. Every storm can be different based on temperature, wind, and moisture types.

This tool is located on the Saginaw County Road Commission website at <https://www.scr-mi.org/plow-tracker/>

On the public facing side this tool will show where our trucks have been, and the date and time last visited. This tool benefits our residents, businesses and schools allowing planning based on real data. Residents can see if their route has been visited recently and decide if they feel comfortable traveling. You can click on a road



# Plow Locator / Tracker



section on the map during a winter weather event or enter an address or street name into the search box.

From an internal administrative perspective, we use this to keep an eye on ever-changing conditions. Our maintenance team needs to be flexible and move equipment and staff to where

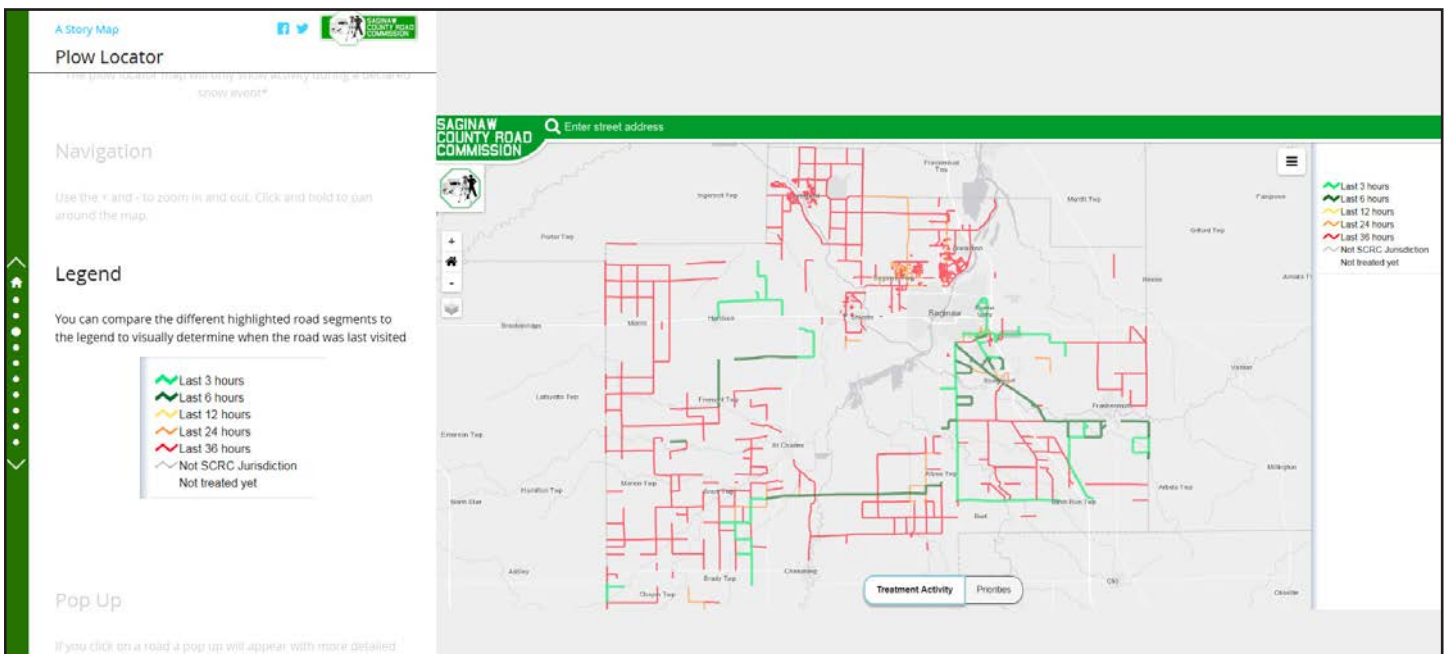
they can be most efficient. During previous events we've had 8-10 inches in Birch Run and less than an inch in Freeland.

The leadership team can see what has been completed and what still needs to be done. Our priority is to open the Emergency Routes and High-Volume Priority Routes. Many times, we go back

later in the day or next few days to push back the corners and clean up the subdivisions and dead-end streets.

Thank you, for your understanding!

**Steve Gradowski**  
I.T. Manager



# ENGINEERING

Numerous roads in Saginaw County received improvements in the 2024 construction season. Approximately twelve million dollars of road work for our countywide paving was administered by the engineering department. This included over 95,000 tons of asphalt placed countywide between township funded and special assessment projects. Approximately 2,000 square yards of concrete were placed in areas to improve road surfaces and curbed areas within the urban boundary. Federally funded projects came in at just over ten million dollars and included 67,000 tons of asphalt. Many of these projects also involved drainage improvements, curb & gutter, driveway approach and shoulder work as well.

We would like to thank all that put effort into our 2024 construction projects. From the design & inspections to the contractors & hardworking crews – this work couldn't have been completed without you!

SCRC's engineering department is already preparing for the 2025 construction season. We look forward to numerous road improvements throughout the county as we work closely with each township to establish a plan and prioritize. The local road millage that passed in August generates ten million dollars per year for the local road system. The dollars generated by each municipality will be spent on the local roads within that municipality. This allows us to focus on applying the right

fix at the right time and will be used for a variety of different jobs, including Chip Seal, Paving, Culverts, Bridges, Gravel Application, etc.

We hope everyone enjoys themselves during the holiday season. Best wishes for a happy and healthy New Year!

*Dan Armentrout,  
Deputy Managing Director/  
Director of Engineering*

*Tim Brown,  
Project Manager*

*Haley Christensen,  
Permit / Safety Officer*

*Nick Hornak,  
Engineering Assistant*

**Below are a list of the upcoming projects for next year:  
\*A complete list will be announced in our Spring / June 2025 Newsletter.**

Township	Location	Project Scope
Bridgeport / Spaulding	Curtis Rd and Sheridan Rd	Roundabout
Chapin	Chapin Rd, North of Ridge Rd over Lamb Creek	Bridge Replacement
Kochville	Kochville Rd from Davis to Michigan	Asphalt Overlay
Taymouth	Bell Rd, South of Townline Rd over Birch Run Creek	Bridge Replacement
Thomas	S Thomas Rd, South of M-46 over Williams Creek	Bridge Replacement
Tittabawassee / Thomas	Tittabawassee Rd from Curve to M-47	Mill and Fill adding roundabout at River Rd
Zilwaukee	Westervelt Rd from I-75 overpass to Kochville	Rubblize concrete and HMA Paving

## Below are the highlights of our summer:

Township	Road	Limits	Project Scope
Birch Run, Bridgeport and Franknemuth	Dixie Hwy	Willard to Junction	Mill and Fill and intersection improvements at Curtis and Burt, Federally Funded
Bridgeport	Blue Bird and Toth	West of Studor	Mill and Fill
Buena Vista	Hess	Towerline to Ruff	HMA Paving
Buena Vista	Perkins	23 <sup>rd</sup> to Outer	HMA Paving
Carrollton	McKinley	Mapleridge to Dead End	HMA Paving
Carrollton	Hickory	McKinley to Carrollton	Crush, Shape, HMA Paving
Carrollton	Harrison	Shattuck to Dead End	HMA Paving
Carrollton	Monroe	Shattuck to Stoker	HMA Paving
Kochville	Trautner	Bay to Davis	Mill and Fill
Kochville	Cardinal Square	Tittabawassee to .34 miles north	Mill and Fill
Richland	Geddes	Fordney to Orr	Crush, Shape , HMA Paving
Richland	O'Hara	Fordney to Orr	Crush, Shape, HMA Paving
Richland / Thomas	Orr	Geddes to Tittabawassee	Paving to All Season
Saginaw	Bunny Trail, Deer Trail, Foxwood and Normandy	Off Lawndale	Mill and Fill
Saginaw	Pine Gate	West of Manon	Mill and Fill
Saginaw	Center	M-46 to M-58	Mill and Fill, Federally Funded
Saginaw	Brockway	Center to Wieneke	Mill and Fill, Federally Funded
Saginaw	Wieneke	Brockway to M-58	Mill and Fill, Federally Funded
Saginaw	McCarty	Hospital to Hemmeter	Mill and Fill, Federally Funded
Spaulding	Curtis	Bishop to Ambrose	HMA Paving, Federally Funded
Taymouth	Burt	Marshall to Moorish over the Pine Run Creek	Bridge Replacement, Federally Funded
Thomas	Thomas	Frost to Tittabawassee	HMA Paving
Thomas	Una and Jacqueline	Madeline to Sue	Crush, Shape, HMA Paving
Thomas	Cheryl, Sybil, Lydia and Rambling	Off N Miller Rd	HMA Paving
Thomas	Wallace	River to Dead End	Crush, Shape, HMA Paving
Thomas	Madeline	Miller to Sue	HMA Paving
Tittabawassee	Kochville	M-47 to Garfield	Crush, Shape, HMA Paving
Tittabawassee	First	Meyer to Freeland	HMA Paving
Tittabawassee	Second	Church to Freeland	HMA Paving
Zilwaukee	Kochville	Westervelt to Melbourne	HMA Paving
Saginaw, Kochville, and Buena Vista	Multiple Locations	Concrete Patches	Remove and Replace Concrete

# SAFETY

The Saginaw County Road Commission was recognized for two awards at The County Road Association Self-Insurance Fund's (CRASIF) Annual Membership Meeting in Gaylord this September.

The "Honor Roll Member Award" was granted for having one of the lowest employee injury rates among road commissions in the state this past year.

The "Turn-Around Award" was also awarded to us for achieving the highest positive change in our workers' compensation injury rate for the past 12 months. Our injury rate factor decreased by 40%!

We are extremely proud of our team for this accomplishment. Teamwork is an essential component of workplace safety, and these awards demonstrate our employees' shared commitment and constant efforts to always put safety first.

In September our employees successfully completed CPR, AED, and First Aid Training. The training took place over 3 days as employees were split up into smaller groups to guarantee enhanced learning and hands-on exercises. This training is essential for workplace safety and prepares our employees should an emergency arise in their presence.

Lastly, with the cold temperatures coming it is important to be aware of your



surroundings as weather conditions can have a huge impact on your safety. We'd like to share a few important winter safety tips below:

- **Protect against slips, trips, and falls** by removing ice and snow from parking lots, sidewalks, entryways, and work areas. Keep steps, ladders and standing surfaces free of snow, mud, and debris. Use 3 points of contact when entering and exiting vehicles.



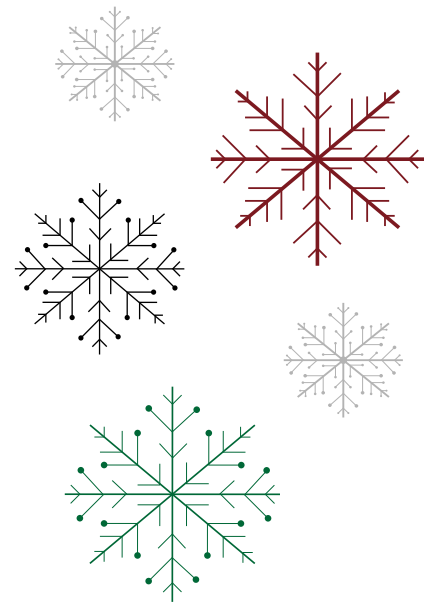
- **Dress for the weather** cold weather essentials include at least three layers of loose-fitting clothing, a hat that covers the head and ears, insulated gloves, and boots with good rubber treads.
- **Know the symptoms of cold stress** this is when the body can no longer maintain its normal temperature. Cold-related illnesses include frostbite, hypothermia, and trench foot. Symptoms range from redness, tingling, numbness, and shivering to name a few. All have possible long-term effects if not identified right away.



Safety is always a topic of discussion, and our safety committee meets monthly to review any new ideas or issues. Please reach out to any member of the safety committee should you have any concerns or suggestions.

**Safety Officer:**  
*Haley Christensen*

**Safety Committee:** *Tim Brown, Zach Chludil, Mike Ecker, Glenn Hardy, Rob Hudec, Ben Illiff, Jason Windy, and a rotating District Foreman.*



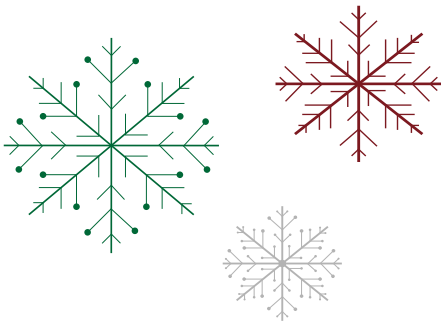
# FINANCE

## Where does the revenue come from & where does it go?

SCRC's main source of revenue is from the Michigan Transportation Fund (MTF), but we also receive revenue specifically for road projects in addition to the MTF from federal sources, state grants, township participation and other smaller sources such as interest, sale of equipment and contributions from private sources to name a few.

The revenue pays for administrative costs, equipment maintenance, capital expenditures such as new equipment and most importantly the preservation/ structural improvements and routine maintenance to Saginaw County's roads and bridges infrastructure.

**Lacey Ziola,**  
**Director of Finance & Benefits**



SAGINAW COUNTY ROAD COMMISSION GENERAL FUND FOR THE YEAR ENDED DECEMBER 31, 2023	
	Actual
<b>Revenue</b>	
Federal	\$ 7,024,493
State	25,580,633
County	4,073,367
Interest	85,221
Charge for services	142,912
Other revenue	772,866
<b>Total Revenue</b>	<b>37,679,492</b>
<b>Expenditures</b>	
Construction / capacity improvements	221,530
Preservation / structural improvements	13,468,015
Preventative / routine maintenance	16,612,124
Administration	1,404,035
Capital Outlay-net	1,025,677
Equipment-net	1,292,022
Other	849,694
Debt service	91,258
<b>Total Expenditures</b>	<b>34,964,355</b>
<b>Fund Balance, End of Period</b>	<b>\$ 11,048,891</b>

# PROJECT HIGHLIGHTS



Verne Rd - Taymouth Twp  
*Culvert Replacement*



Dixie Hwy (Junction & Willard)  
Bridgeport / Birch Run Twps - *Chip Seal*



Curtis Rd & Dixie Hwy - Bridgeport Twp  
*Roundabout*



Webster Rd & Sarle Rd - Tittabawassee Twp  
*Sign Shop / Replacement of Stop Sign*



O'Hara Rd (Fordney & Orr) - Richland Twp  
*Crush, Shape, HMA Paving*



Countywide  
*Road Patching*

# UPCOMING DATES

12/24 Christmas Eve\*\*

12/25 Christmas Day\*\*

12/31 New Years Eve\*\*

1/1 New Years Day\*\*

1/20 Martin Luther King Jr Day\*\*

3/9 Daylight Savings Time Begins

4/18 Good Friday\*\*

4/20 Easter

5/11 Mother's Day

**\*\* SCRC offices and facilities are closed \*\***

# NEW HIRES

**Dalton Bissonette**

*Assistant Mechanic*

# SCRC ANNIVERSARIES

MILESTONE ANNIVERSARY DATES

EMPLOYEE	YEARS OF SERVICE
Todd Ferguson	30
Rob Hudec	25
Mike Wendling	25
Richard Vollmer	20
Roger Clauss	20
James Popp	10
Steve Gradowski	5
Scott Ferguson	5
Christina Rodriguez	1

## SUMMER OFFICE HOURS:

Monday—Thursday 6:00 A.M.—4:00 P.M.

**\*\*CLOSED FRIDAY\*\***

## REGULAR OFFICE HOURS:

Monday—Friday

7:00 A.M.—3:30 P.M.

## COMMISSIONERS

Richard H. Crannell, P.E. - Chairperson

Deb Kestner - Vice-Chairperson

John D. Sangster - Member

Todd Hare - Member

Ed Wasmiller - Member

## MANAGING DIRECTOR

Dennis L. Borchard

Saginaw County Road Commission maintains over 1,850+ miles of roads. While some local road projects are able to be done by cost-sharing with townships, the majority of the maintenance is the Saginaw County Road Commission's responsibility.

There are 207 bridges to maintain along with smaller tributaries and ditches adding more than 3,474 culverts to the road system. The list continues to grow as new roads are built to meet the needs of our ever changing and expanding community.

Maintaining the county road system is no easy task. However, every Saginaw County Road Commission employee is committed to building and maintaining a quality road system that will last for generations to come. We are proud to be a part of and to serve the Saginaw County Community.

3020 Sheridan Avenue  
Saginaw, MI 48601

[www.scrc-mi.org](http://www.scrc-mi.org)

 **Happy Holidays!** 

Phone: 989-752-6140

Fax: 989-752-8934